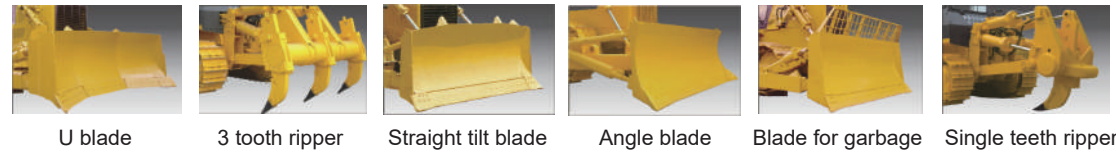


Optional Attachment



U blade

3 tooth ripper

Straight tilt blade

Angle blade

Blade for garbage

Single teeth ripper



Wheel Loader



Motor Grader



Excavator



Backhoe Loader



Vibratory Roller



Truck Crane



Bulldozer



Paver



Skid Steer

CHANGLIN

YD320

SINOMACH-HI International Equipment Co.,Ltd.

(额定功率) Rated power: 257kW@1800rpm (整机重量) Weight: 37200kg



- The appearance of the vehicle is based on optimization design.
- Higher engine power reserves efficiency, bigger torque output, lower fuel consumption, while better reliability.
- Hydraulically controlled drive, automatically speed regulating and non-stop gear shifting.
- 3-element, single stage, single phase torque converter for higher efficiency and bigger capacity.
- The novel hexahedral cab offers excellent visibility, the powerful ventilation and unparalleled dust-free.
- The final drive uses triangle Spline and tip relief, crowned gear drive for enhanced balance and the stability during power transmission and added life
- New blade is more durable and capacious
- Alarming monitoring system is efficient and reliable
- Implement controls are piloted to minimize operating effort



国机重工集团国际装备有限公司

SINOMACH-HI INTERNATIONAL EQUIPMENT CO., LTD.

Add: No. 898 West Huang He Road, Changzhou city, Jiangsu Province, China

PC: 213136

Tel: +86 18206118629

<https://www.cnchanglin.com/>

E-mail: sales8@changlin.com.cn



国机重工集团国际装备有限公司
SINOMACH-HI INTERNATIONAL EQUIPMENT CO., LTD.

